



**Noble Marine UK RS 200 National Championships 2026**  
**Saturday 15<sup>th</sup> to Thursday 20<sup>th</sup> August 2026**  
**Hosted by Royal Torbay Yacht Club**  
**NOTICE OF RACE**

**ORGANISING AUTHORITY (OA)**

This event will be organised by the Royal Torbay Yacht Club (RTYC) in conjunction with the RS Class Association.

The notation '[NP]' in a rule of the notice of race (NoR) means that a boat may not protest another boat for breaking that rule. This changes RRS 60.1.

**1. RULES**

- 1.1 The event is governed by the rules as defined in *The Racing Rules of Sailing*.
- 1.2 Racing rules Race Signals AP, 33, 34, 35, 40.1, 40.2(c), 60.1, 60.3(b), 61.1(a), 61.2(b), 61.4(b)(1), A2, A5.1 and A5.2 will be changed. The changes appear, in full, in this notice of race or in the sailing instructions. The sailing instructions may also change other racing rules

**2 SAILING INSTRUCTIONS**

The sailing instructions will be available on the Official Noticeboard.

**3 COMMUNICATION**

- 3.1 The online official noticeboard is located at <https://rtyc.org/event/rs200-nationals/>
- 3.2 [DP] While racing, except in an emergency, a boat shall not make voice or data transmissions and shall not receive voice or data communication that is not available to all boats.
- 3.3 A boat shall carry a tracking device if so required by the OA . The device will be supplied by the OA.
- 3.4 The tracking device shall be used in accordance with instructions contained in the sailing instructions. Failure to do so may result in a penalty.

**4 ELIGIBILITY AND ENTRY**

- 4.1 The event is open to boats of the RS200 class.
- 4.2 Helm must be a full member, and crew must be either a full member or crew member of the RS Class Association, except where the helm has an 'any crew' membership.
- 4.3 Eligible boats may enter by completing the online form at <https://www.rs200sailing.org/championships/index.asp?pg=Home&eid=2708>
- 4.4 To be considered an entry at an event, a boat shall complete all registration requirements and pay all fees.
- 4.5 Any competitors aged under 18 shall complete an Under 18s Consent Form. This can be downloaded from the RS Class Association website and should be completed and submitted at registration.

4.6 No entries will be accepted after Sunday 26<sup>th</sup> July 2026. Entries after this date are at the discretion of the organizing authority and must be made in writing (contact [lizzie@rs-association.com](mailto:lizzie@rs-association.com)).

4.7 The number of boats entering the event will initially be restricted to 100. The organizing authority may increase the number of permitted entries at its absolute discretion.

## 5 FEES

Entry fees are as follows:

Class	Entry before 4 <sup>th</sup> May 2026	Entries between 5 <sup>th</sup> May – 26 <sup>th</sup> July 2026
RS200	£299	£345

## 6 CREW LIMITATIONS

Does not apply.

## 7 ADVERTISING

[DP] [NP] Boats may be required to display advertising chosen and supplied by the organising authority.

## 8 QUALIFYING SERIES AND FINAL SERIES

Does not apply.

## 9 SCHEDULE

9.1 Registration – Saturday 15<sup>th</sup> August 12.00 to 18.00 - Ground Floor RTYC  
- Sunday 16<sup>th</sup> August 09.00 to 10.30

9.2 Briefing: – A Briefing will be held at 19.00 on Saturday 15<sup>th</sup> August - Corinthian Room RTYC.

9.3 Racing:	<i>Date</i>	<i>Races</i>	<i>1<sup>st</sup> Warning Signal</i>
	Sunday 16 <sup>th</sup> August	2 Races	11.55
	Monday 17 <sup>th</sup> August	2 Races	11.55
	Tuesday 18 <sup>th</sup> August	2 Races	11.55
	Wednesday 19 <sup>th</sup> August	2 Races	11.55
	Thursday 20 <sup>th</sup> August	2 races	10.55

9.4 Ten races are scheduled with up to three races on any day.

9.5 On the last scheduled day of racing, no warning signal will be made after 14.00

9.6 The race committee may change the scheduled start time of races due to weather conditions or other causes. Any change to the first start time will be posted on the official notice board by 20:00 the evening before the affected races.

## 10 EQUIPMENT INSPECTION

10.1 Boats may be inspected at any time.

## 11 CLOTHING AND EQUIPMENT

RRS 40.1 and 40.2(c) shall apply at all times while afloat.

## **12 VENUE**

The Sailing Area will be Torbay (see Addendum 1).

## **13 COURSES**

13.1 The courses to be sailed will be Windward Leeward.

13.2 It is intended to use Gate Starts, but Line Starts may be used.

## **14 PENALTY SYSTEM**

14.1 Appendix T (Arbitration ) applies.

## **15 SCORING**

15.1 Two races are required to be completed to constitute a series.

15.2 (a) When fewer than four races have been completed, a boat's series score will be the total of her race scores.

(b) When from four to seven races have been completed, a boat's series score will be the total of her race scores excluding her worst score.

(c) When from eight to ten races have been completed, a boat's series score will be the total of her race scores excluding her two worst scores.

This changes RRS A2.

## **16 [DP] [NP] SUPPORT PERSON VESSELS**

16.1 [DP] No support vessels are allowed at this event.

## **17 CHARTERED OR LOANED BOATS**

Does not apply.

## **18 BERTHING**

[DP] Boats shall be kept in their assigned places in the dinghy park.

## **19 HAUL-OUT RESTRICTIONS**

Does not apply.

## **20 DIVING EQUIPMENT AND PLASTIC POOLS**

Does not apply.

## **21 DATA PROTECTION**

The RTYC Data Privacy Policy can be found <https://rtyc.org/privacy/>

The RS Class Association Data Processing Policy is available on the class website.

## **22 RISK STATEMENT**

RRS 3 of the Racing Rules of Sailing states: "The responsibility for a boat's decision to participate in a race or to continue to race is hers alone".

Sailing by its nature is an unpredictable sport and therefore inherently involves an element of risk. By taking part in the event, each competitor agrees and acknowledges that:

(a) They are aware of the inherent element of risk involved in the sport and accept responsibility for the exposure of themselves, their crew and their boat to such inherent risk whilst taking part in the event;

- (b) They are responsible for the safety of themselves, their crew, their boat and their other property whether afloat or ashore;
- (c) They accept responsibility for any injury, damage or loss to the extent caused by their own actions or omissions;
- (d) Their boat is in good order, equipped to sail in the event and they are fit to participate;
- (e) The provision of a race management team, patrol boats and other officials and volunteers by the event organiser does not relieve them of their own responsibilities;
- (f) The provision of patrol boat cover is limited to such assistance, particularly in extreme weather conditions as can be practically provided in the circumstances;
- (g) It is their responsibility to familiarise themselves with any risks specific to this venue or this event drawn to their attention in any rules or information produced for the venue or event and to attend any safety briefing held for the event.

## 23 INSURANCE

Each participating boat shall be insured with valid third-party liability insurance with a minimum cover of £3,000,000 Pounds Sterling per incident or the equivalent.

## 24 PRIZES

24.1 The overall winners of the championship series will be awarded the first-place trophy and title National Champions.

24.2 Other prizes may be awarded, dependent on entries and at the discretion of the OA as follows:

Top 10 places overall

Silver division 1st 3 places

Bronze division 1st 3 places

1st Lady Helm

1st Lady Team

1st Master Helm (45 or older at start of championship)

1st Grandmaster helm (60 and over)

1st Youth Helm (22 or under at start of championship)

1st Youth Team (22 or under at start of championship)

1st Youth Crew (22 or under at start of championship)

1st Junior Team (18 or under at start of championship)

1st Junior Helm (18 or under at start of championship)

1st Junior Crew (18 or under at start of championship)

Loving Cup (1st couple)

1st Family (parent and child)

1<sup>st</sup> Siblings

Top Club (best placed 3 boats from any one club - first named club on entry only)

Top Uni (best placed 3 boats from any one Uni - first named Uni on entry only)

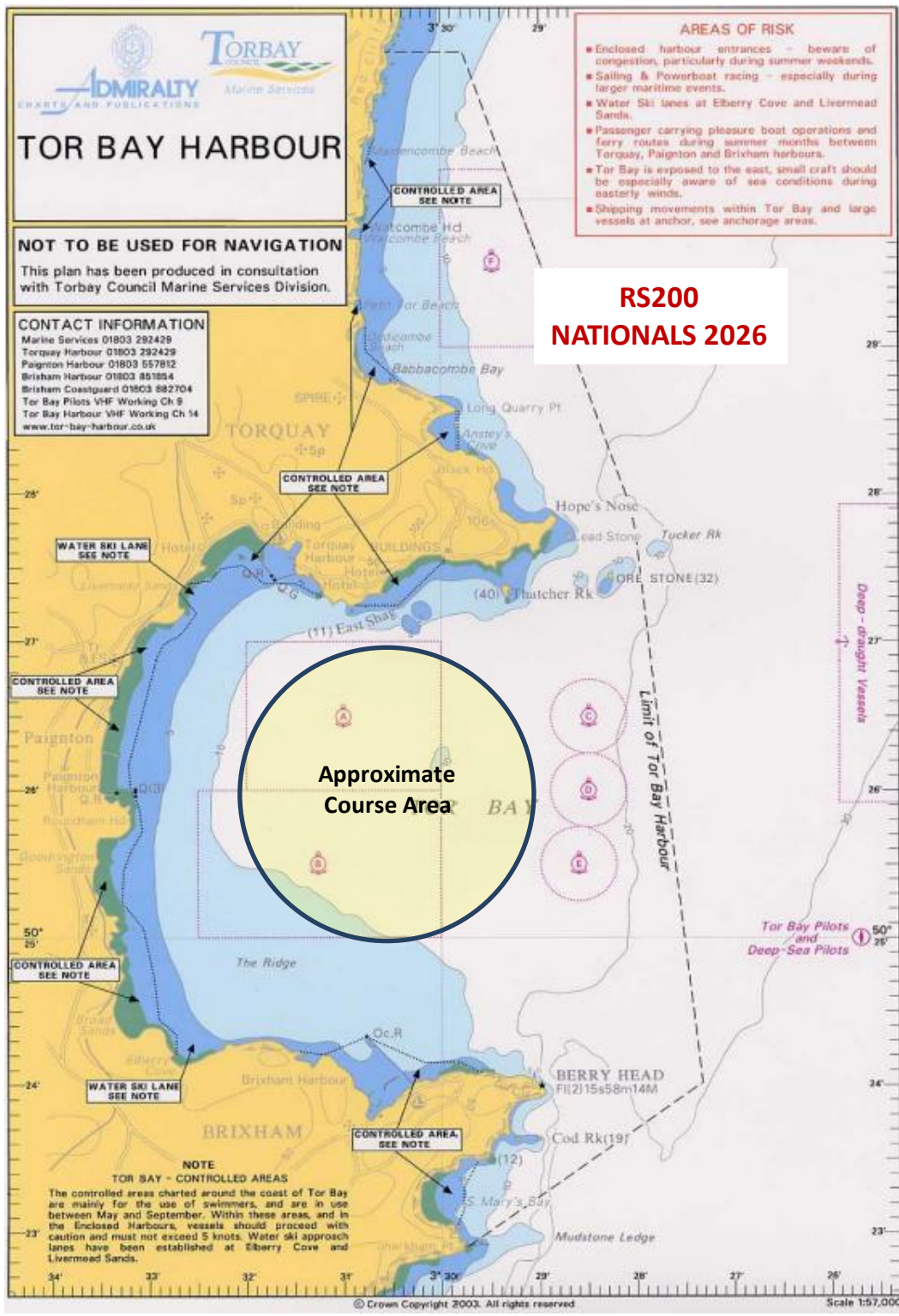
Top Buddy Group (best placed 3 boats from 1 buddy group)

## 25 FURTHER INFORMATION

For further information, please contact [events@rtyc.org](mailto:events@rtyc.org) or RS200 Class Secretary [lizzie@rs-association.com](mailto:lizzie@rs-association.com)

## END OF NOTICE OF RACE

# ADDENDUM 1



## OTHER EVENT AND VENUE INFORMATION



- **Post Code TQ1 2BG** - Please ensure you use postcode when travelling
- [Tor Bay Harbour - Home \(tor-bay-harbour.co.uk\)](http://tor-bay-harbour.co.uk)
- **Dinghy and Trailer Parking** on Haldon Pier subject to availability with additional parking for trailers at a secure location nearby.
- **Public Car Parking above Beacon Quay** for information and passes visit [Beacon Quay - Torbay Council](http://Beacon Quay - Torbay Council) All cars must be moved to the public car park immediately after dropping of trailer or unloading.
- For **Accommodation and Camping** visit [englishriviera.co.uk/accommodation](http://englishriviera.co.uk/accommodation)
- **Royal Torbay Yacht Club** bar and restaurant will be open all day and evening throughout the event serving meals, bar snacks and refreshments. Detailed information, including menus will be published on the club event website.
- **Club Entry Access Code** – At registration competitors and their supporters will be given a door entry code to gain access to the club throughout the event. The front door must remain closed at all times, for security reasons.
- **Class Social Events** will take place in the Royal Torbay Yacht Club. Details and menus for all social events will be published on the class and club event websites. Additional tickets for family and friends will be available.
- **Club event website** - <https://rtyc.org/event/rs200-nationals/>